

Under Pressure:

Navigating Perpetual Chaos in Supply Chain Management



A Rising Tide of Pressure



As companies grapple with growing complexities and the urgent need for adaptation and resilience, the evolving scenario demands a new level of agility and foresight.

>> The Pressure Points: <<

Customers

Competition is intensifying, squeezing prices and market share. Organizations are navigating a sea of market challenges, including an explosion of competitors, the rise in the expectation of traditional and digital native customers, and expanding cross-border commerce – all of which are quickly reshaping the business landscape.

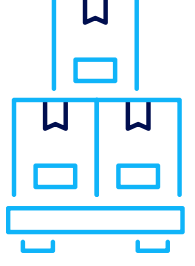
68%



A staggering 68% of supply chain executives report feeling caught in a cycle of significant disruptions, with little time to recuperate before facing the next challenge.¹

Suppliers

On the supply side, the pendulum is swinging back from the pandemic-driven boom, with softening market conditions in some industries shifting conversations from shortages to excess inventory. Meanwhile, rising commodity costs and the risk of future shortages or disruptions are compelling manufacturers to broaden their supplier base, adding to their extended supplier networks and making complex portfolios and inventory management harder to manage than ever before. Manufacturers need better visibility, speed, and responsiveness to protect their bottom lines.



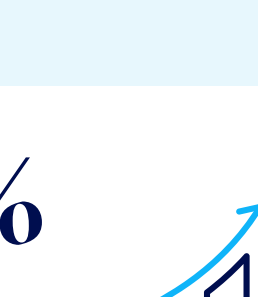
\$250B+

Excess inventory is a \$250+ billion problem in the U.S. alone.²

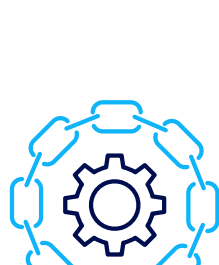
Product

Companies are confronting a rapidly expanding and increasingly complex product portfolio range, making predicting demand and supply changes even more difficult. This challenge is compounded by a growing trend towards adopting a 'product-as-a-service' model, marking a significant shift in traditional product strategies.

22.3%



The global everything-as-a-service market is expected to grow at a compound annual growth rate of 22.3% from 2022 to 2030 to reach USD 1,208.5 billion by 2030.³



66%

66% of supply chain planners face tech overload with too many systems to manage and collaborate effectively.⁴

Technology

Legacy platforms, constrained by limited computing power, result in prolonged manual and batch processing, forcing teams to choose speed over accuracy in a fast-paced market. This compromise fails to deliver, as it hampers agility and worsens supply chain coordination, deepening the divide created by system silos. And there's no quick fix.

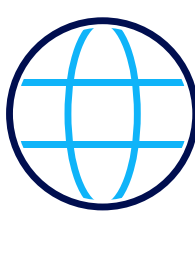
Data

Businesses are inundated with vast, fast-moving data from multiple sources while needing more infrastructure to manage it effectively. This results in scattered, unactionable data across the supply chain. As data grows in size and complexity, its processing becomes costlier and less efficient, leading to outdated and disjointed decision-making.

40%



Data quality issues consume 40% of data analysts' time.⁵



155%

ESG regulation has increased by 155% over the past decade, reflecting the rapid growth of sustainability-based policy interventions.⁶

Sustainability

Governmental regulations, economic shifts, and global influences frequently contribute to an unpredictable landscape for the performance of sustainable supply chains. Such unforeseen alterations tend to exacerbate the challenges in an already intricate and ever-evolving business milieu, intensifying the pressure on organizations to adapt and thrive.

Workforce

Operationally, despite increasingly mobile workforces, there's a noticeable skills gap across various disciplines. This is compounded by the challenging work environment, the ongoing shift towards online channels, and the continuous expansion of networks.

60%

60% of supply chain planners report being stressed and overworked in this complex and demanding environment.⁷

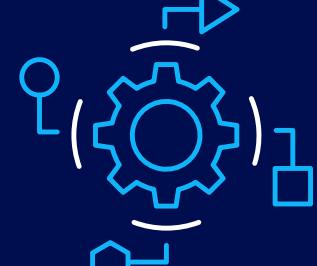
40%

40% of manufacturers agree that hiring and retaining talent is essential to their growth plans.⁷

>> Automation is the Answer <<

50%

Due to these mounting internal and external pressures, it is predicted that more than 50% of supply chain organizations will use machine learning (ML) to augment decision-making capability by 2026.⁸



Steering Through the Storm: What Does the Future Hold?

In the face of these growing pressures, what would this new environment look like if you could build it today?



Real-Time Data Synchronization: A data environment that updates instantly with events, ensuring all applications are in sync with the latest supply chain activities.

A Unified Database: A single database merging all supply chain data, surpassing traditional analytics for enhanced efficiency.

End-to-End Connectivity: Every application, from planning to logistics, is integrated on a unified platform for seamless operation across the entire supply chain.

Cloud-Based Platform Agility: A cloud infrastructure offering vast computing power for quick simulations, eliminating delays between planning and execution.

Direct Data Access for Partners: Carriers and trading partners with straightforward access to data, streamlining collaboration and reducing data transfer complexities.

AI-Driven Intelligence: Embedded predictive and generative AI across systems, allowing for rapid, accurate decision-making and enhanced productivity.

Embracing Tomorrow



Blue Yonder Paves the Way for a Data-Driven, Resilient Future in Supply Chain Management

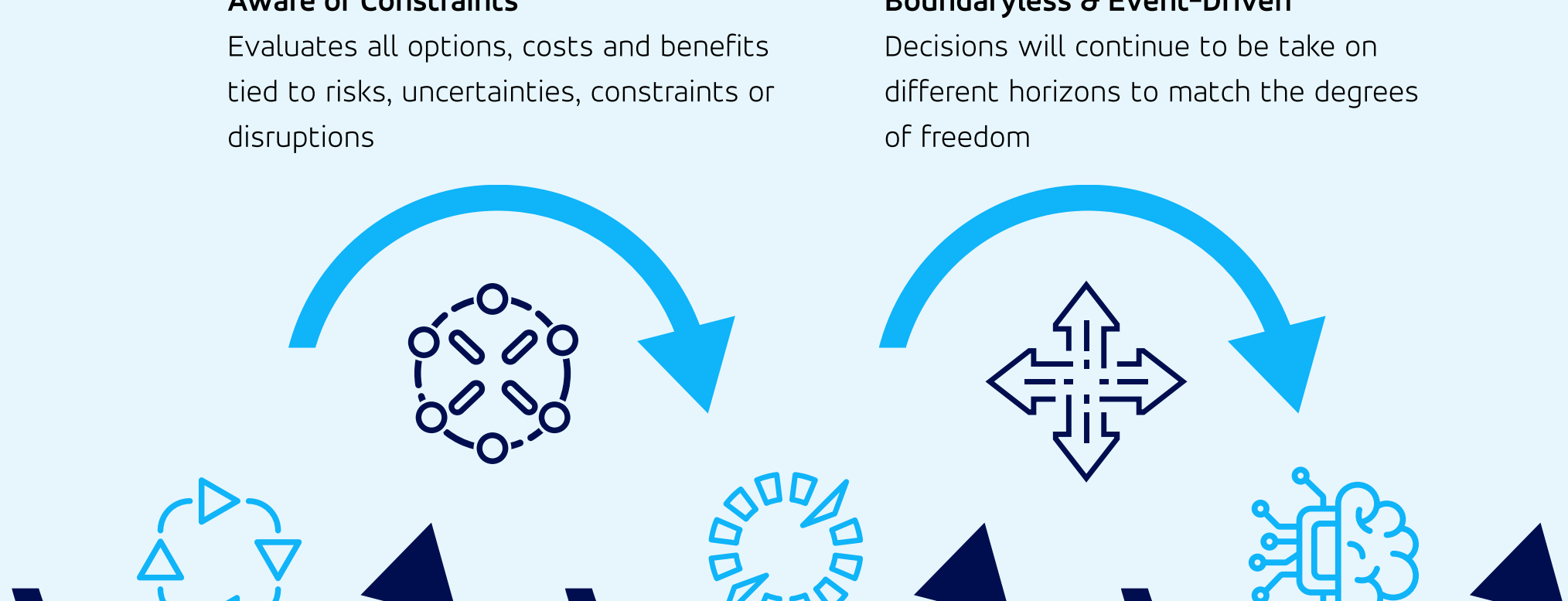
Envision a future where you're fully leveraging today's data, computational power, and cutting-edge innovations.

Blue Yonder's Cognitive Planning enhances decision-making with intelligent automation and AI-driven suggestions, boosting supply chain effectiveness and refining forecast precision. This leads to heightened revenue, improved margins, elevated customer satisfaction, and a resilient and effective supply chain.

How AI-enabled planning works:

Aware of Constraints
Evaluates all options, costs and benefits tied to risks, uncertainties, constraints or disruptions

Boundaryless & Event-Driven
Decisions will continue to be taken on different horizons to match the degrees of freedom



Synchronized End-to-End
Collaborates across the entire supply chain to ensure the team creates the optimum plan

Proactive & Dynamic
Then looks at the complete landscape of opportunities and anticipates demand

Smarter and Faster
All processes and scenario plans are optimized by embedded AI & ML

Ready To Turn Down the Pressure?

[Learn More About Blue Yonder Cognitive Planning](#)

¹ The Rise of the Ecosystem — and 4 More Supply Chain Predictions, Gartner
² The Next Supply Chain Challenge Isn't a Shortage — It's Inventory Glut, HBR
³ Everything As A Service Market Size, Share & Trend Analysis Report By Offering, Grand View Research
⁴ Interoperability: A Plus, Not a Prerequisite, Accenture
⁵ Data Performance Management Is Essential To Drive Data's ROI, Forrester
⁶ ESG regulation in 2024: Everything you need to know, Sustainable Future News
⁷ Supply Chain Planning Leaders Survey, Blue Yonder
⁸ The Rise of the Ecosystem — and 4 More Supply Chain Predictions, Gartner