

# The Smarter Store for Hardline Retailers

Digitally transforming the store to be more customer-focused, efficient, and autonomous



## Fight labor shortages and reduce turnover with more flexible work schedules, aligned with demand



Ensure the right employees are always available to serve your customers



Appeal to mobile-native employees with self-service tools to view and manage schedules



Weekly schedules automatically comply with labor standards and corporate policies

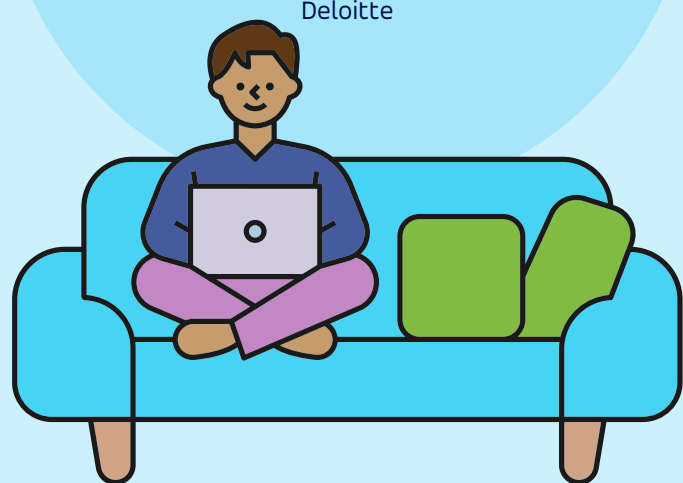
**70% of retailers** say hourly labor shortages will hamper their 2022 growth plans

[Wall Street Journal](#)



**83% of consumers** expect flexible fulfillment options when they shop (curbside, BOPIS, etc.)

[The Future of Retail Stores](#)  
Deloitte



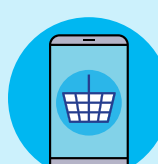
## Increase margins for your omni-channel business with seamless in-store fulfillment of online orders



Increase productivity with a real-time view of all order fulfillment tasks



Integration with parcel carriers to provide last mile delivery options



Improve order accuracy with guided picking to help grow your omni-channel business

## Electronic shelf label integration keeps prices in synch with the POS without manual intervention



Update prices and promotions instantly throughout the store



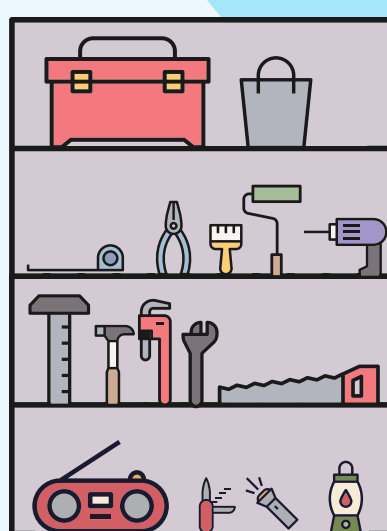
Receive an automatic alert when there's an out-of-stock



Digital labels can light up to guide in-store picking of online orders

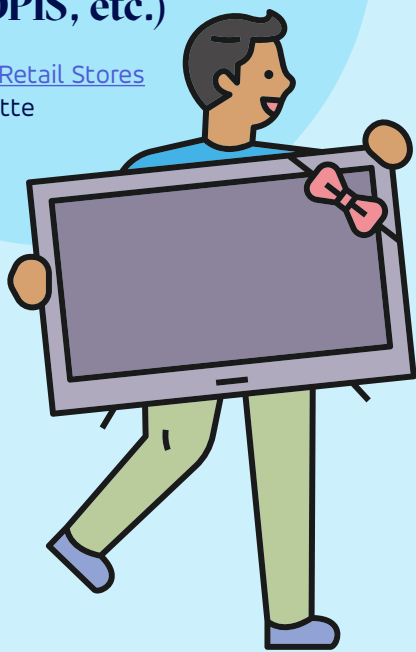
**The electronic shelf label (ESL) market is expected to be \$2 Billion by 2027**

[ESL Market to hit \\$2B by 2027](#)  
GlobalNewsWire



**83% of consumers** expect flexible fulfillment options when they shop (curbside, BOPIS, etc.)

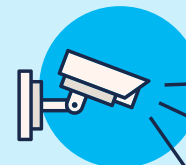
[The Future of Retail Stores](#)  
Deloitte



## Integration with IoT edge technologies can further modernize the in-store experience for customers and employees alike



Verify employees when they clock in and out of work with facial recognition



Monitor foot traffic and dwell times throughout store to identify hot spots



Identify license plates with smart cameras to streamline curbside

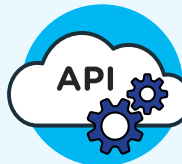
## A holistic supply chain platform that synchronizes planning and execution to the shelf edge



Proven AI/ML forecasting for faster decisioning and better results



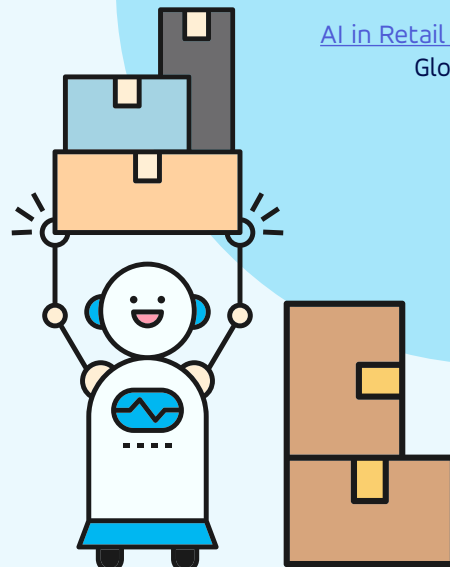
Scalable and secure cloud platform protects your data



Open APIs to easily add new capabilities as your business grows

**Artificial Intelligence (AI) in retail is expected to grow at a CAGR of 34.4% through 2027.**

[AI in Retail worth \\$19.9B by 2027](#)  
GlobalNewsWire



## Benefits

Better labor utilization

Increased retention

Improved productivity

Omni-channel excellence

Modernized experiences

Future-proof capabilities

Blue Yonder helps hardline retailers design smarter stores by seamlessly blending the physical and digital with the power of AI. This enables exceptional shopping experiences, an empowered and engaged workforce, and agile operations aligned with corporate strategy.

Built upon a holistic, edge-aware supply chain platform with an open API-based architecture, we ensure orchestration from end to end and help future proof the store.