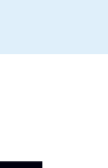


Maturing Digital Intelligence Across the Warehouse Workforce

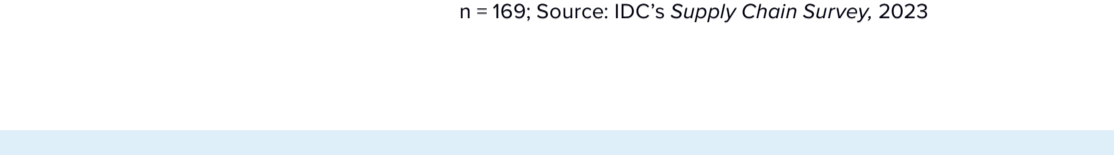
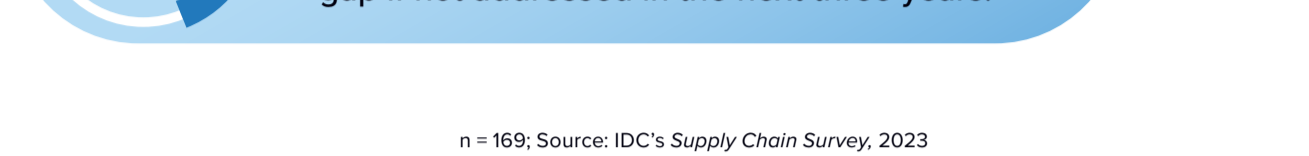
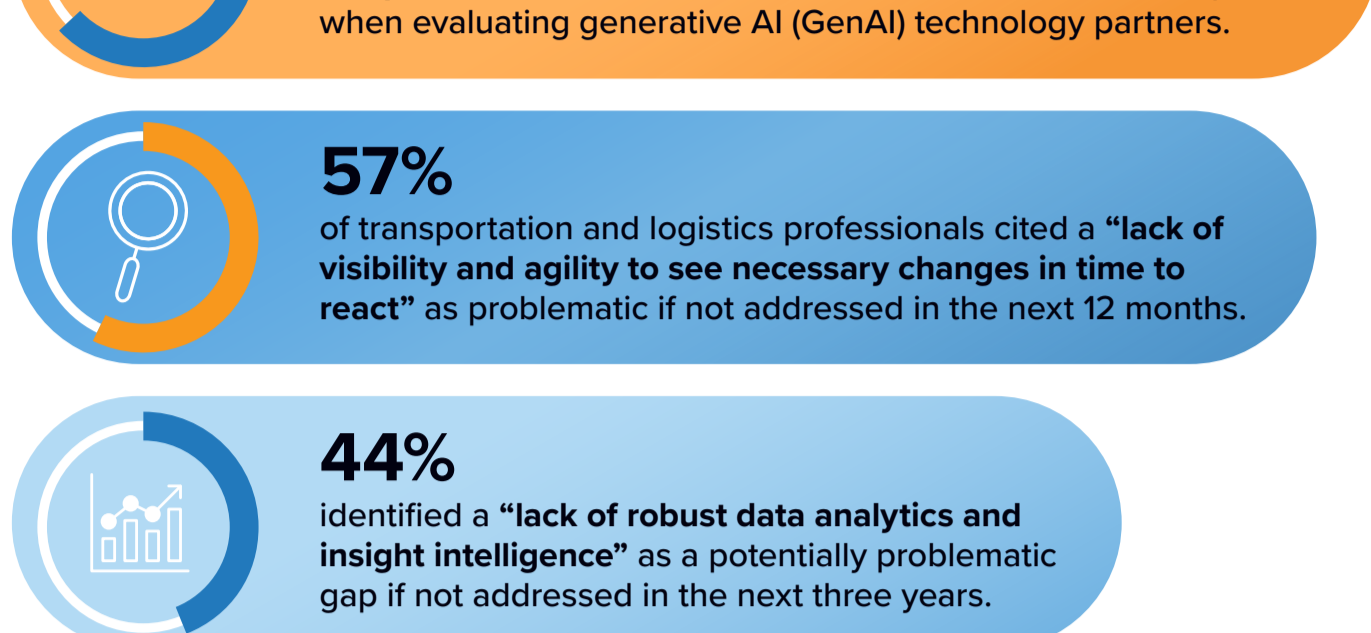
Supply chain intelligence delivers an empowered and efficient workforce, integrating logistics and warehousing as value-added services.



Travis Eide
Research Director,
WW Global Supply Chain Transportation and Global Trade, IDC

Logistics Technology Still Falls Short of Solving Business Problems

Organizations struggle to gather and model data that will be the most impactful in transforming operations. For example:



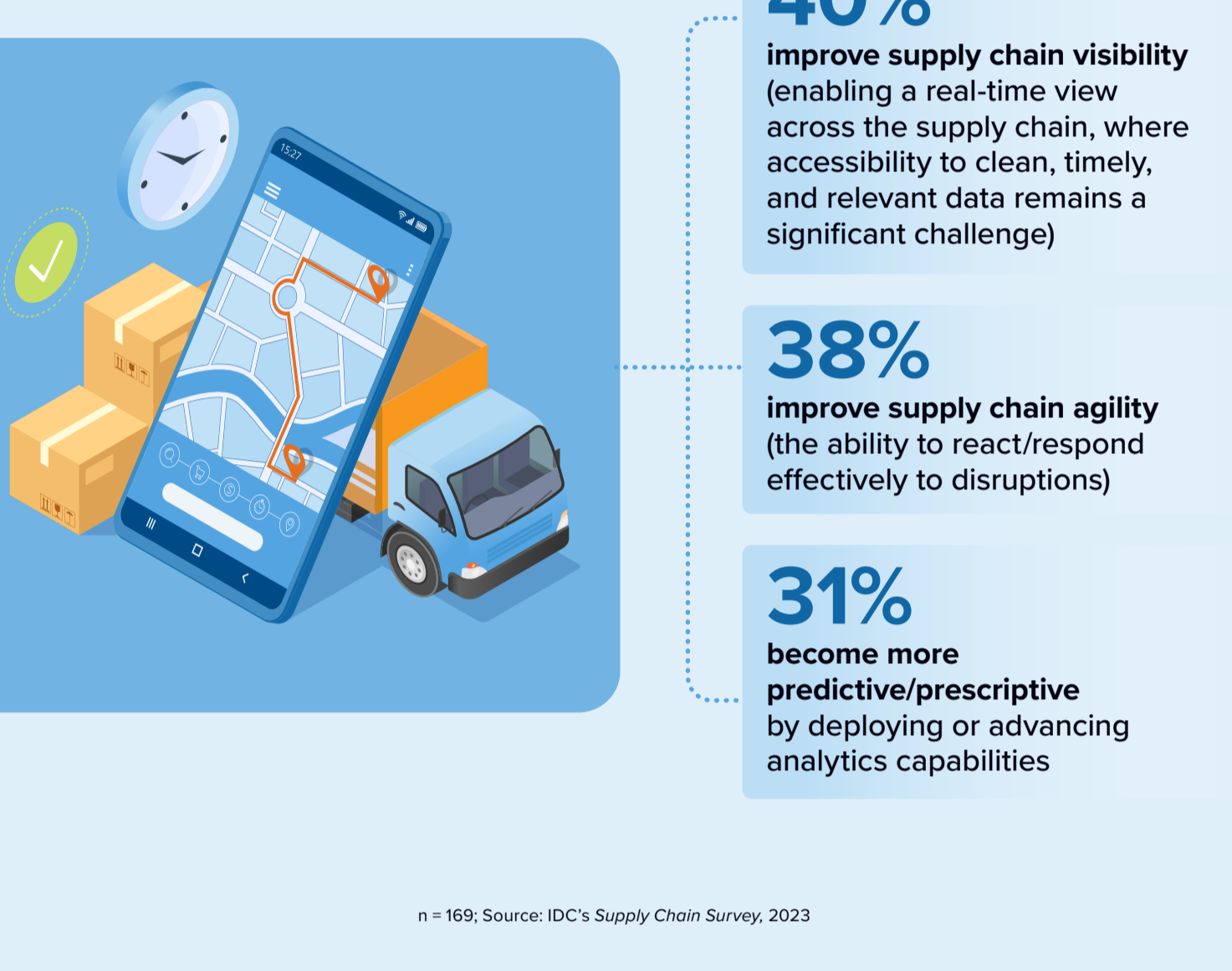
n = 169; Source: IDC's Supply Chain Survey, 2023

Better Collaboration Improves Resilience and Supply Chain Intelligence

Operating in step with supply chain partners requires trust and transparency to reduce the impact of future shocks.



What steps are you taking to mitigate risk in your supply chain?



n = 169; Source: IDC's Supply Chain Survey, 2023

Optimized People, Processes, and Technology Can Generate Efficiencies and Boost Productivity

While few supply chains have mature AI capabilities, executive leaders are prioritizing near-term investments to make teams more effective and efficient.

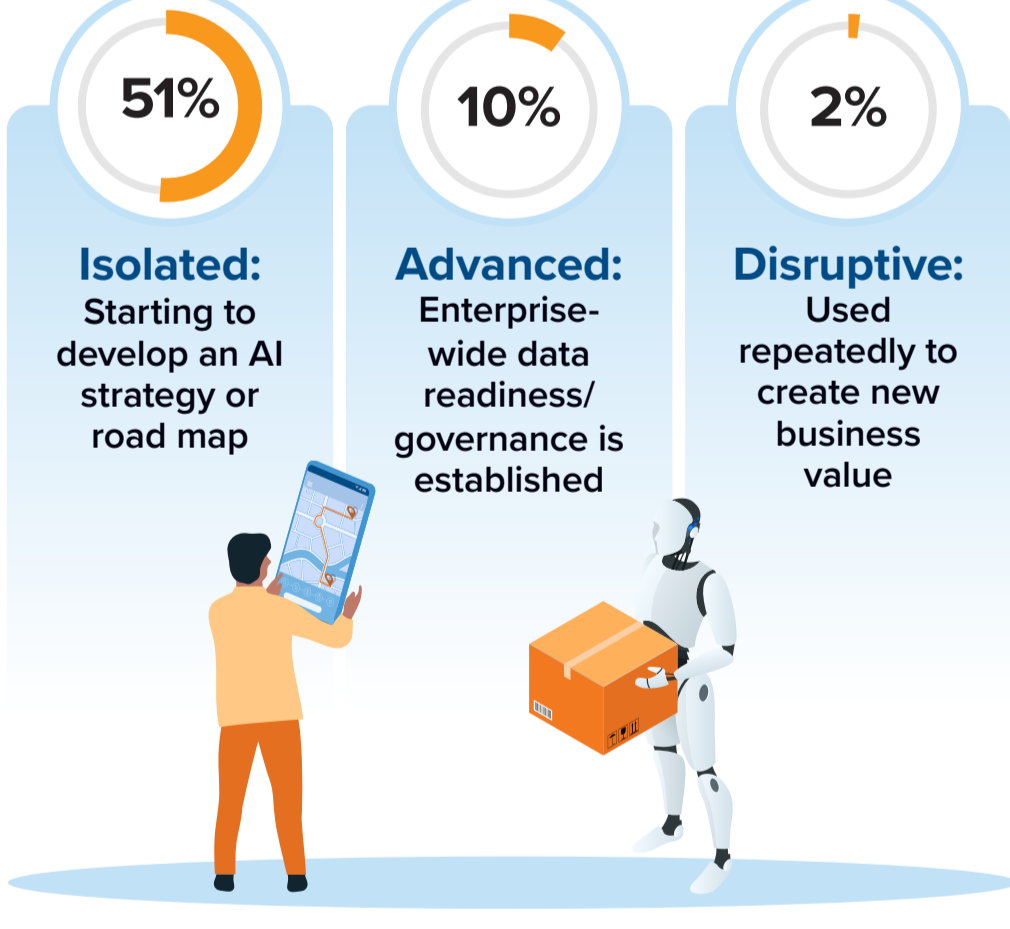


n = 13; Source: IDC's Global C-Suite Technology Survey, 2023

n = 18; Source: IDC's Global C-Suite Technology Survey, 2023

n = 18; Source: IDC's Global C-Suite Technology Survey, 2023

What best describes your organization's overall approach to AI in logistics?

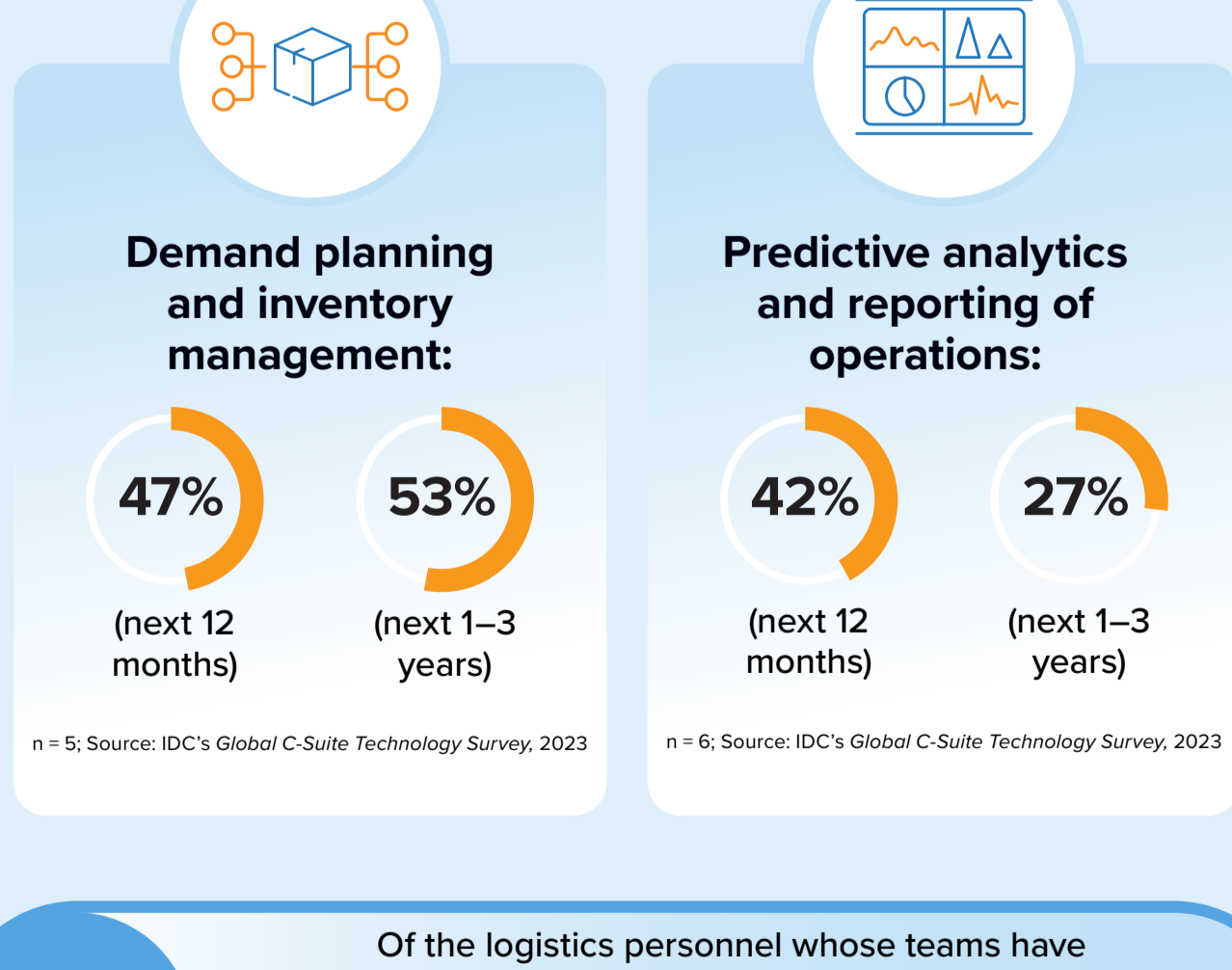


n = 79; Source: IDC's Global C-Suite Technology Survey, 2023

A Modern Supply Chain Requires Operational Intelligence to Synchronize Logistics and Warehousing

A new generation of workers accustomed to modern technology wants it integrated into their roles to improve productivity and increase job satisfaction.

Transportation and logistics respondents planning to implement GenAI to improve:



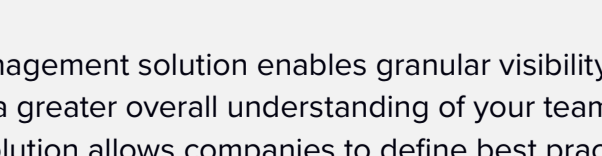
n = 5; Source: IDC's Global C-Suite Technology Survey, 2023

n = 6; Source: IDC's Global C-Suite Technology Survey, 2023



n = 169; Source: IDC's Global Supply Chain Survey, 2023

Message from the Sponsor



Fulfill your potential™

Blue Yonder's Labor Management solution enables granular understanding of your team and a tailored workforce strategy to deliver a greater overall understanding of your team and your business.

Our highly scalable solution allows companies to define best practices and performance expectations, engage with employees to develop and incentivize their best work, and empower supervisors to effectively track their teams. Our solution is implemented by some of the largest 3PLs in the world, who track, measure, support, communicate, strategize, and manage to levels they previously thought were impossible.

[Find out more](#)